

Paul Mason Associates



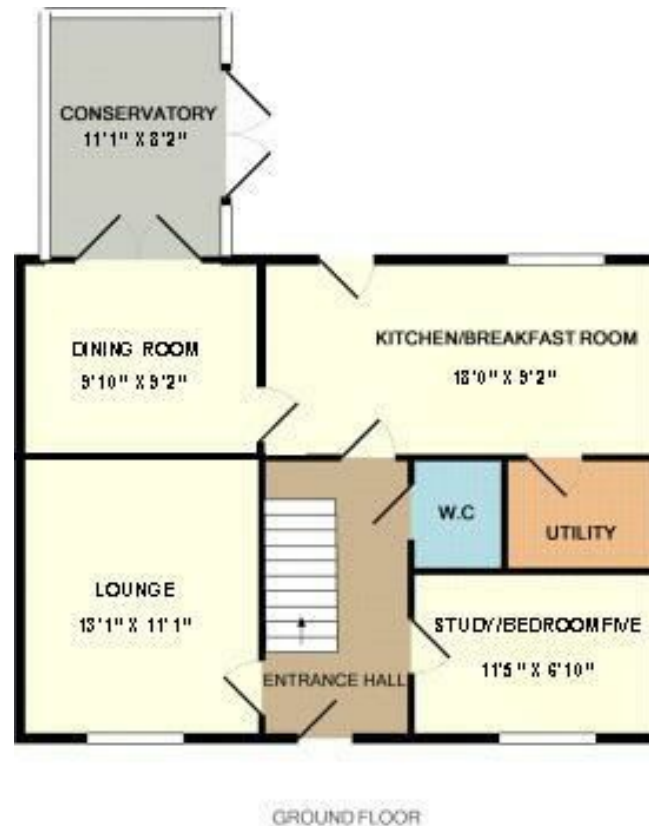
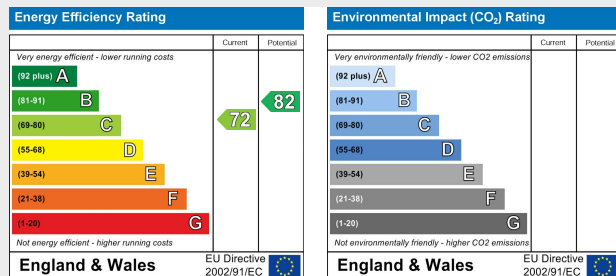
Mayland Quay, Mayland, CM3 6GJ
Guide price £500,000

- Detached House
- Four/Five Bedrooms
- Spacious Accommodation Throughout
- Three Reception Rooms
- Study
- En-suite & Family Bathroom
- Utility Room
- Landscaped Rear Garden
- Double Garage & Driveway
- EPC - C

Guide price of £500,000 - £525,000.....This well presented four/five bedroom detached house is located within Mayland, a village within the Dengie Peninsular, just off the coast of the River Blackwater which provides views over Osea Island and Heybridge Basin. The village also has an idyllic nature reserve which is home to lots of wildlife. The village boasts many amenities including a large recreational ground with football pitches, tennis courts, and play equipment for children. There are two public houses/restaurants, two sailing clubs, doctors and a primary school. There are shops including a bakery, post office, fish and chip shop and beauty salon to name a few.

The accommodation comprises a hallway, lounge, fitted kitchen, utility room, dining room, conservatory, study and a fitted cloakroom. To the first floor there is a landing providing access to bedroom one which benefits from a fitted en-suite, three further bedrooms and a fitted three piece bathroom suite.

Externally there is a driveway with parking for numerous vehicles to the front of the property as well as a detached double garage. To the rear, the property has been recently re-landscaped with a low maintenance rear garden which is mainly laid with artificial grass, and benefits from a large patio seating area. Viewing comes highly recommended to fully appreciate the size and standard of the accommodation on offer.



Whilst every attempt has been made to ensure the accuracy of the floor plan contained here, measurements of doors, windows, rooms and any other items are approximate and no responsibility is taken for any error, omission, or mis-statement. This plan is for illustrative purposes only and should be used as such by any prospective purchaser. The services, systems and appliances shown have not been tested and no guarantee as to their operability or efficiency can be given.
Made with Metropix 62018

Distances

Maldon Town Centre (8.4 miles)

Mayland Primary School (0.2 miles)

Althorne Railway Station (4.5 miles)

Chelmsford City Centre (16.4 miles)

(All mileages are approximate)

ACCOMMODATION

GROUND FLOOR

Entrance Hall

Double glazed entrance door to front. Coved ceiling, Stairs to first floor with storage cupboard below. Tiled flooring with underfloor heating.

Lounge

4.0m x 3.4m (13'1" x 11'1")

Double glazed window to front. Coved ceiling. Inset ceiling speakers. Feature gas fireplace. Underfloor heating.

Study/Bedroom Five

3.5m x 2.1m (11'5" x 6'10")

Double glazed window to front. Coved ceiling. Underfloor heating.

Cloakroom

Two piece suite comprising vanity wash hand basin and low level WC. Coved ceiling. Tiled flooring with underfloor heating.

Kitchen/Breakfast Room

5.5m x 2.8m (18'0" x 9'2")

Double glazed window to rear. Part glazed door leading to rear garden. Coved ceiling. Inset spotlights. Inset ceiling speakers. Wooden units fitted to eye and base level with stone effect work surfaces. Inset 1 1/2 sink and drainer. Integrated dishwasher. Space for Range style six ring gas hob with double electric oven (to remain). Space for American fridge-freezer. Tiled flooring with underfloor heating.

Utility Room

Double glazed window to side. Wooden units to eye and base level with stone effect work surfaces. Inset sink and drainer. Space for washing machine and dryer. Coved ceiling. Inset spotlights. Tiled flooring with underfloor heating.

Dining Room

3.0m x 2.8m (9'10" x 9'2")

Coved ceiling. Inset ceiling speakers. Underfloor heating. Double glazed doors leading to :-

Conservatory

3.4m x 2.5m (11'1" x 8'2")

Double glazed window to rear and sides. Double glazed French doors leading to rear garden. Electric radiator. Tiled flooring.

FIRST FLOOR

Landing

Coved ceiling. Access to fully boarded loft space. Stairs to ground floor. Large storage cupboard. Doors to :-

Bedroom One

3.6m x 3.4m (11'9" x 11'1")

Double glazed window to rear. Coved ceiling. Inset ceiling speakers. Underfloor heating. Door to :-

En-suite

Obscure double glazed window rear. Three piece suite comprising large shower cubicle with

attachments, low level WC and pedestal wash hand basin. coved ceiling. Inset spotlights. Tiled flooring with underfloor heating. Fully tiled walls. Heated chrome towel rail.

Bedroom Two

3.4m x 3.4m (11'1" x 11'1")
Double glazed window front.
Coved ceiling. Underfloor heating.

Bedroom Three

3.0m x 2.6m (9'10" x 8'6")
Double glazed window front.
Coved ceiling. Underfloor heating.

Bedroom Four

3.2m x 2.3m (10'5" x 7'6")
Double glazed window rear.
Coved ceiling. Underfloor heating.

Family Bathroom

Obscure double glazed window to front. Three piece suite comprising panelled bath with jets and shower attachments, low level WC and pedestal wash hand basin. Coved ceiling. Inset spotlights. Built in ceiling speaker. Airing cupboard. Part tiled walls.

Tiled flooring with underfloor heating. Heated chrome towel rail.

EXTERIOR

Rear Garden

Recently relandscaped. Commencing a sandstone patio area with pathway leading to raised patio seating area. The remainder laid with artificial grass. Fenced to boundaries. Timber shed. Access to both sides leading to frontage. Outside tap. Outside lighting. Pedestrian door to :-

Detached Double Garage

Electric up and over door. Power and lighting connected. Boarded loft space. Pedestrian door leading to rear garden.

Driveway and Frontage

Driveway providing off road parking for 2-3 vehicles. EV charging point to remain. Pathway leading to entrance door. Access to rear garden both sides via side gate. Decorative shrubs to front.

Property Services

Gas - Mains
Electric - Mains
Water - Mains
Drainage - Mains
Local Authority - Maldon

Viewings

Strictly by appointment only through the selling agent Paul Mason Associates 01245 382555.

Important Notices

We wish to inform all prospective purchasers that we have prepared these particulars including text, photographs and measurements as a general guide. Room sizes should not be relied upon for carpets and furnishings. We have not carried out a survey or tested the services, appliances and specific fittings. These particulars do not form part of a contract and must not be relied upon as statement or representation of fact.



Paul Mason Associates

35 The Street
Latchingdon
Chelmsford
Essex
CM3 6JP
T: 01621 742 310

Bruce House
17 The Street
Hatfield Peverel
Chelmsford
CM3 2DP
T: 01245 382 555

Sales | Lettings | Development | Investment

F: 01245 381257 E: info@paulmasonassociates.co.uk www.paulmasonassociates.co.uk

Paul Mason Associates Limited Registered in England Number - 6767946
Registered Office - Bruce House, The Street, Hatfield Peverel CM3 2DP





Paul Mason Associates

35 The Street
Latchingdon
Chelmsford
Essex
CM3 6JP

T: 01621 742 310

Bruce House
17 The Street
Hatfield Peverel
Chelmsford
CM3 2DP

T: 01245 382 555

Sales | Lettings | Development | Investment

F: 01245 381257 E: info@paulmasonassociates.co.uk www.paulmasonassociates.co.uk

Paul Mason Associates Limited Registered in England Number - 6767946
Registered Office - Bruce House, The Street, Hatfield Peverel CM3 2DP





Paul Mason Associates

35 The Street
Latchingdon
Chelmsford
Essex
CM3 6JP
T: 01621 742 310

Bruce House
17 The Street
Hatfield Peverel
Chelmsford
CM3 2DP
T: 01245 382 555

Sales | Lettings | Development | Investment

F: 01245 381257 E: info@paulmasonassociates.co.uk www.paulmasonassociates.co.uk

Paul Mason Associates Limited Registered in England Number - 6767946
Registered Office - Bruce House, The Street, Hatfield Peverel CM3 2DP





Paul Mason Associates

35 The Street
Latchingdon
Chelmsford
Essex
CM3 6JP

T: 01621 742 310

Bruce House
17 The Street
Hatfield Peverel
Chelmsford
CM3 2DP

T: 01245 382 555

Sales | Lettings | Development | Investment

F: 01245 381257 E: info@paulmasonassociates.co.uk www.paulmasonassociates.co.uk

Paul Mason Associates Limited Registered in England Number - 6767946
Registered Office - Bruce House, The Street, Hatfield Peverel CM3 2DP

